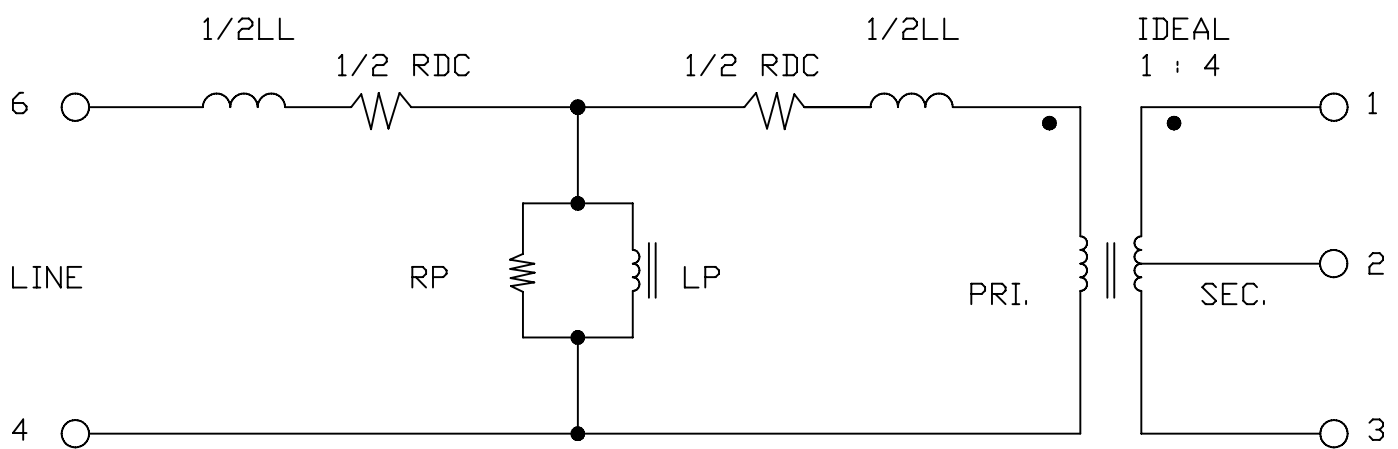


## 2-4-1WL CIRCUIT MODEL



RDC : SUM OF WINDING RESISTANCES. CAUTION : DO NOT PASS DC ON COMPLETED TRANSFORMERS.

TYPICAL : 626 mΩ

LL : LEAKAGE INDUCTANCE INDEPENDENT OF FREQUENCY.

TYPICAL : 200nH

LP : SHUNT INDUCTANCE MEASURED AT 0.1V, IN ORDER RUN THE CORE MATERIAL AT ITS DEFINITION LEVEL.

TYPICAL @ 200K HZ : 35μH

RP : IRON LOSS AS SHUNT RESISTANCE MEASURED AT 0.1V

TYPICAL @ 200 KHZ = 900 Ω