



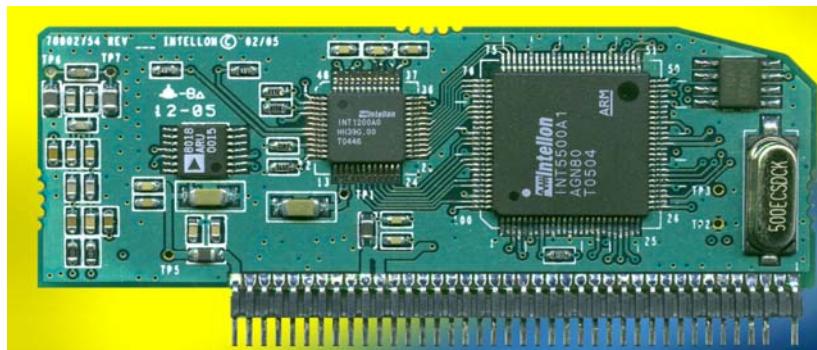
INT55MX

Turbo SIMPLE™ Module



Features

- Based on Intellon's Turbo INT5500CS chipset providing up to 85Mbps data rate on the powerline
- HomePlug 1.0 compatible
- Integrates all components necessary to add HomePlug functionality to any embedded system at industry's lowest cost
- Complete manufacturing kit for *easy* production and *fast* time-to-market
- Compact vertical or right-angle mounting design using Intellon's SIMPLE PowerBus connector
- Minimum footprint
- Simplifies development cycle, assembly, testing, and certification approvals
- Module can be self manufactured or sourced from Intellon's manufacturing partners
- Flash programming via host interface supports ease of manufacture and firmware upgradability
- Upgrade path to future High Speed HomePlug AV SIMPLE modules
- 40-pin low power consumption package
- Licensed to use Intellon PowerPacket and No New Wires registered marks



Benefits

Intellon's INT55MX Turbo SIMPLE Module is the third-generation module of the SIMPLE (Single Inline Module – Power Line Enabled) family. As Intellon introduces new Baseband and AFE ICs, products incorporating Intellon SIMPLE module can be upgraded to future SIMPLE modules to provide improved performance, functionality and/ or reduced cost with minimum adaptation of existing product designs.

Based on Intellon's turbo chipset INT5500CS, the INT55MX SIMPLE module integrates most of the components required for HomePlug functionalities on a tiny single in-line package. This package can be easily connected into any existing embedded system via the proprietary SIMPLE PowerBus™ header, instantly adding HomePlug functionality with virtually no PCB space, and without the hassle of a system redesign.

The INT55MX is designed to fit in either of the following:

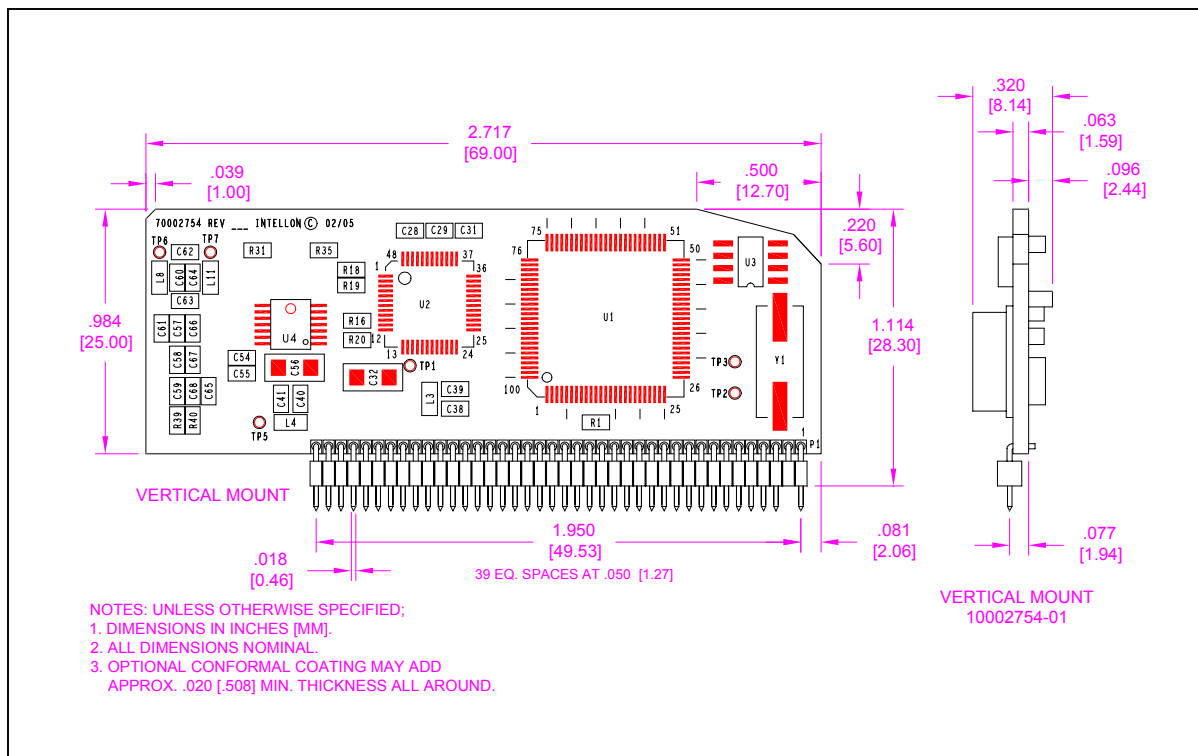
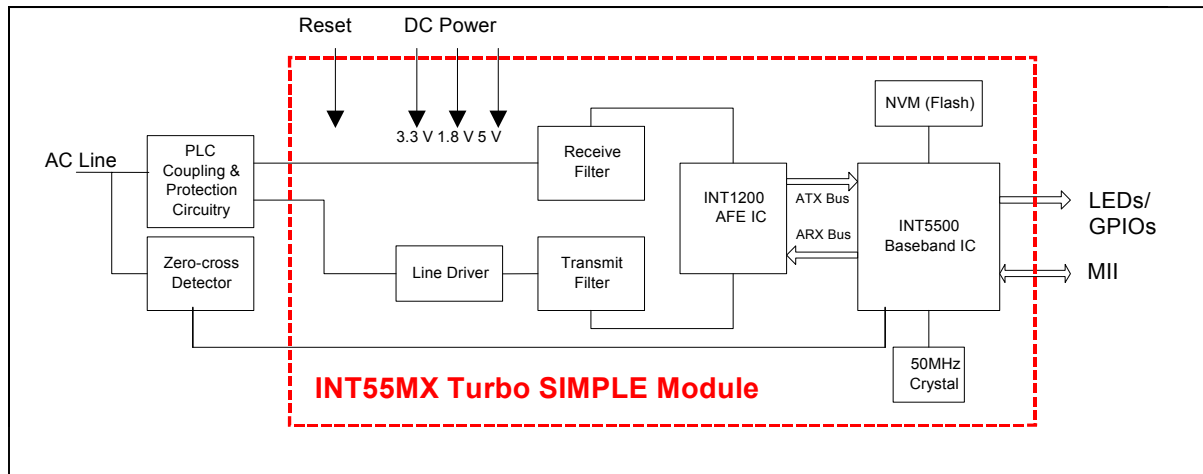
- Systems with an embedded power supply and no external electrical cord (wall adapters).
- Systems with AC or DC cords, directly to the power outlet or an external AC/DC adapter.

Each module integrates Intellon's INT5500 baseband and INT1200 AFE ICs, the crystal, the NVM (flash), line drivers and required filter circuitry. The PLC coupler, transient protection, and the AC zero-cross detector are the only external components required on the AC side of the main power supply. Available host interfaces for the INT55MX module are MII PHY or MII Host/DTE.

The INT55MX module is truly the industry's most integrated and cost effective way of adding HomePlug functionality to any embedded networking or consumer electronics product.

How can I get HomePlug into my product? SIMPLE, just plug it in!

INT55MX Turbo SIMPLE Module



<http://www.intellon.com/>

Headquarters

5100 West Silver Springs Blvd.
 Ocala, FL 34482
 (352) 237-7416
 (352) 237-7616 (Fax)

Silicon Valley Office

1731 Technology Dr., Suite 560
 San Jose, CA 95110
 (408) 501-0320
 (408) 501-0323 (Fax)



©2005 Intellon Corporation. Intellon Corporation reserves the right to make changes to this document without notice. Intellon Corporation makes no warranty, representation or guarantee regarding the suitability of its products for any particular purpose. Intellon Corporation assumes no liability arising out of the application or use of any product or circuit. Intellon Corporation specifically disclaims any and all liability, including without limitation consequential or incidental damages.

Intellon, PowerPacket, No New Wires, SIMPLE, and SIMPLE PowerBus are registered trademarks of Intellon Corporation. HomePlug is a registered trademark of the HomePlug Powerline Alliance.