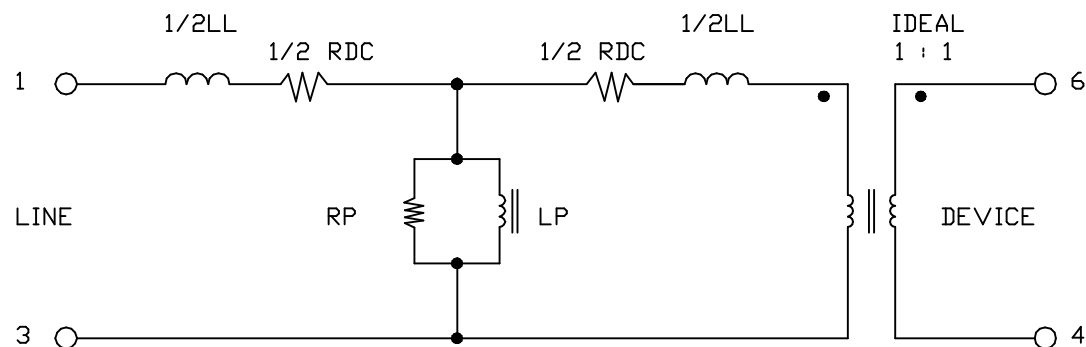


## ATS-311 CIRCUIT MODEL



RDC : SUM OF WINDING RESISTANCES. CAUTION : DO NOT PASS DC ON COMPLETED TRANSFORMERS.

TYPICAL : 224 OHM

LL : LEAKAGE INDUCTANCE INDEPENDENT OF FREQUENCY.

TYPICAL : 4.6mH

LP : SHUNT INDUCTANCE MEASURED AT -22 dBm, IN ORDER RUN THE CORE MATERIAL AT ITS DEFINITION LEVEL.

TYPICAL @ 200 HZ : 2.5H

@ 1000 HZ : 1.8H

RP : IRON LOSS AS SHUNT RESISTANCE MEASURED AT -22 dBm.

TYPICAL @ 200 HZ : 11K OHM

@ 1000 HZ : 10K OHM