



YONGCHENG

SPECIFICATION FOR APPROVAL

DATE: MAR 05, 2009

SAMPLE Q'TY 5 PCS

CUSTOMER : ACUWA

CUSTOMER P/N: AM-011

YONGCHENG P/N : YL-1T008N-365

DESCRIPTION : 1 PORT RJ-45 JACK

APPROVED SIGNATURES	
YONGCHENG APPROVED SIGNATURES	CUSTOMER APPROVED SIGNATURES
APPROVED BY: LiaoZongCheng	APPROVED BY:
DATE: 2009/03/05	DATE:
APPROVED No. :	APPROVED No. :

(ZUNYI)YONGCHENG ENTERPRISE INC.

LanGongShan,Zun Yi City,GuiZhou,China

Tel: 0852-3162322 13087896733 Fax: 0852-3162322 E-mail<lzc0818@163.com>

1 PORT RJ-45 JACK

P/N:YL-1T008N-365 DATA SHEET(REFERENCE ACUWA AM-011)



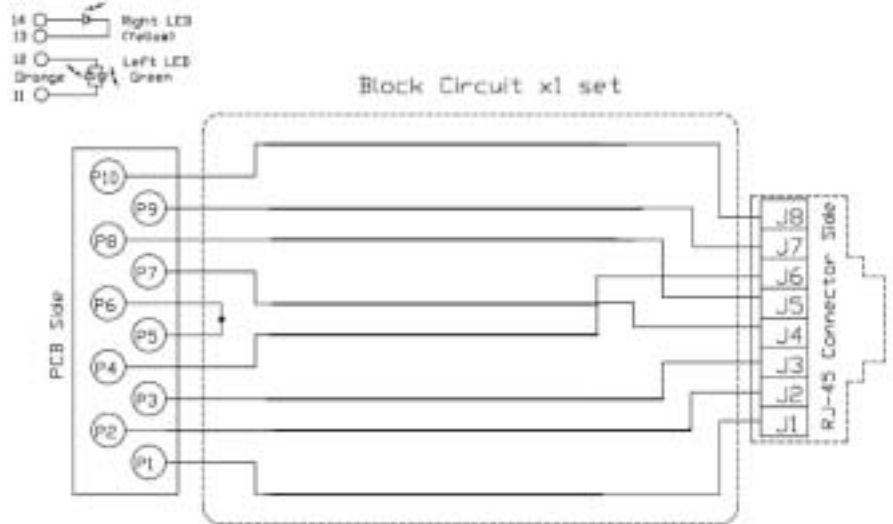
YONGCHENG
ELECTRONIC CORP.

Page : 1/5

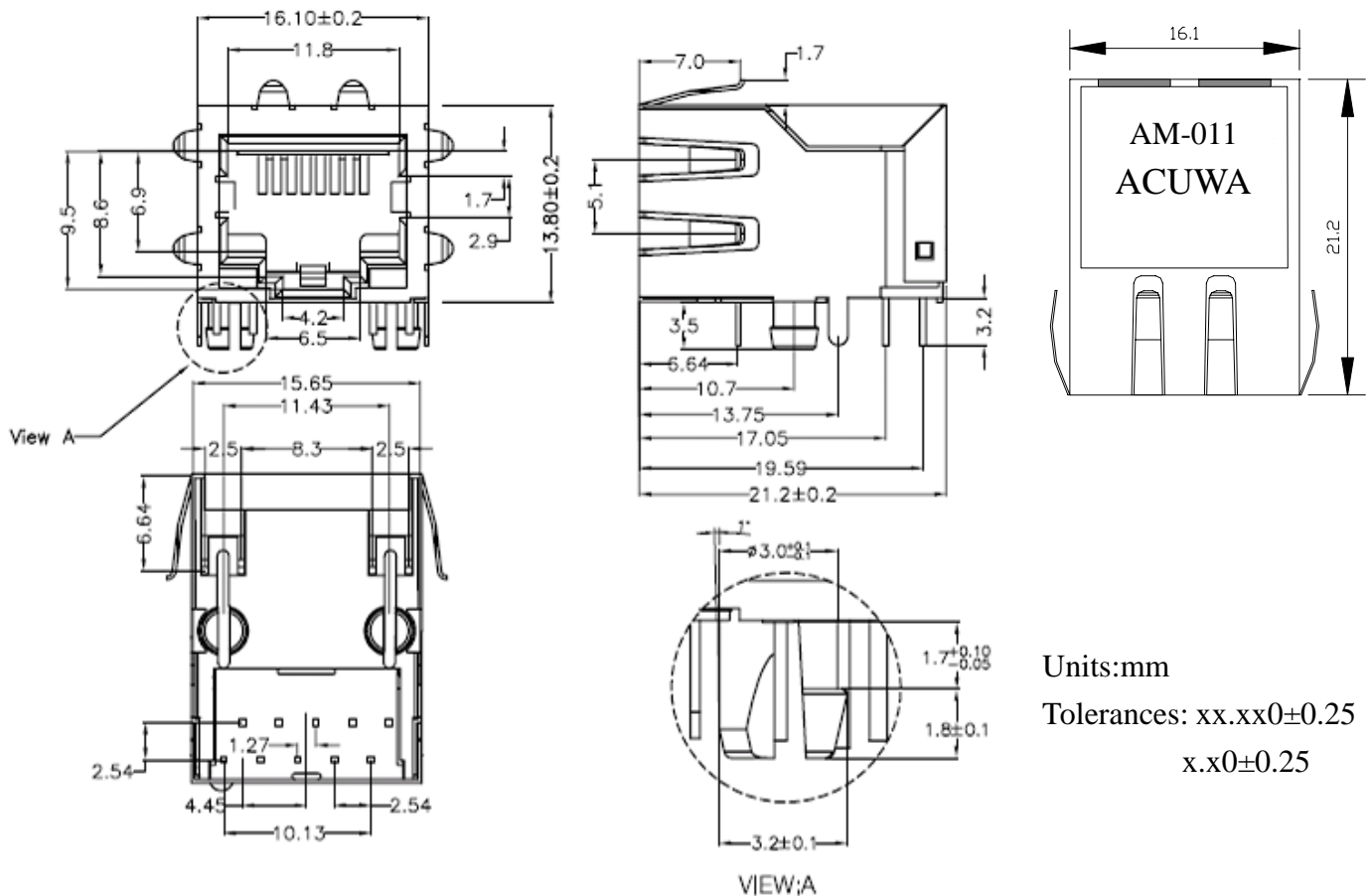
Feature



Schematic



Mechanicals



1. Plastic Material : Thermoplastic (UL 94V-0), Black Housing

1 PORT RJ-45 JACK

P/N:YL-1T008N-365 DATA SHEET(REFERENCE ACUWA AM- 011)



YONGCHENG
ELECTRONIC CORP.

Page : 2/5

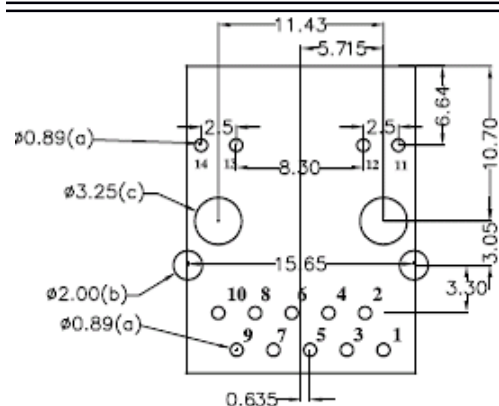
2. Metal Shield : Brass , 20u inches thick Nickel

3. Spring Wire : 0.45mm Dia. Phosphor bronze with selective gold plating

4. Solder Pin : 0.4x0.4mm, Phosphor bronze with solder Plated

5. Durability : 300 Mating cycles Min.

PCB Layout Mounting Hole (Top View)



TOP VIEW(COMPONENT SIDE)
RECOMMENDED P.C.B. LAYOUT

Note:

- 1.Holes Type(a)P1-P10 Assign EtherNet
Holes Type(a)P12-P14 Assign LED
- 2.Holes Type(b) Assign Shield Cover
- 3.Holes Type(c) Fix Jack.
- 4.Holes Tolerances $\begin{matrix} +0.1 \\ 0 \end{matrix} \left[\begin{matrix} +0.004^* \\ 0.000^* \end{matrix} \right]$
- 5.Holes Pitch Tolerance $\pm 0.08 \left[\pm 0.003^* \right]$

SAMPLES TEST REPORT



Page :2/6

PART NO.		AM-011		DATE			2009/3/05					
DESCRIPTION		1 PORT RJ-45 JACK WITH 1000BASE-T MAGNETICS MODULE										
ITEM	TEST EQUIPMENTS	TEST CONDITION @ 25	SAMPLES NO. TEST PIN	1	2	3	4	5	SPECIFICATION			
									Min	Typ	Max	
OPEN	3250		P1-P2	PASS	PASS	PASS	PASS	PASS	OPEN			
			P2-P3	PASS	PASS	PASS	PASS	PASS				
			P3-P4	PASS	PASS	PASS	PASS	PASS				
			P4-P5	PASS	PASS	PASS	PASS	PASS				
			P6-P7	PASS	PASS	PASS	PASS	PASS				
			P7-P8	PASS	PASS	PASS	PASS	PASS				
			P8-P9	PASS	PASS	PASS	PASS	PASS				
			P9-P10	PASS	PASS	PASS	PASS	PASS				
			J1-J2	PASS	PASS	PASS	PASS	PASS				
			J2-J3	PASS	PASS	PASS	PASS	PASS				
			J3-J4	PASS	PASS	PASS	PASS	PASS				
			J4-J5	PASS	PASS	PASS	PASS	PASS				
			J5-J6	PASS	PASS	PASS	PASS	PASS				
			J6-J7	PASS	PASS	PASS	PASS	PASS				
			J7-J8	PASS	PASS	PASS	PASS	PASS				
SHORT	3250		P1-J1	PASS	PASS	PASS	PASS	PASS	SHORT			
			P2-J2	PASS	PASS	PASS	PASS	PASS				
			P3-J3	PASS	PASS	PASS	PASS	PASS				
			P4-J6	PASS	PASS	PASS	PASS	PASS				
			P7-J4	PASS	PASS	PASS	PASS	PASS				
			P8-J5	PASS	PASS	PASS	PASS	PASS				
			P9-J7	PASS	PASS	PASS	PASS	PASS				
			P10-J8	PASS	PASS	PASS	PASS	PASS				
			P5-P6	PASS	PASS	PASS	PASS	PASS				

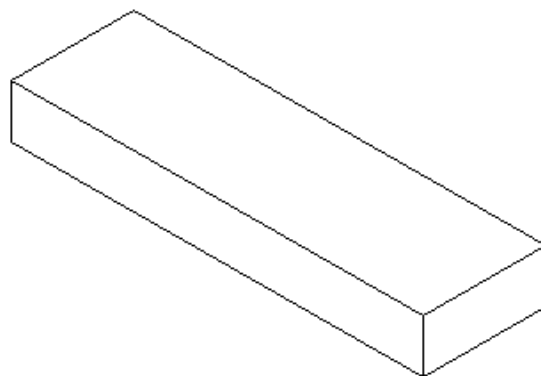
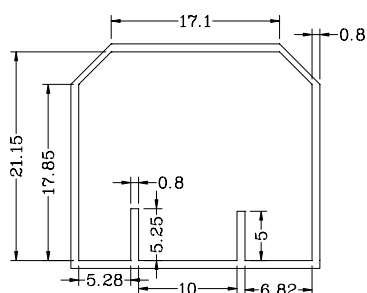


YONGCHENG ELECTRONIC CORP.

SAMPLES PACK SPECIFICATIONS

Page: 5/5

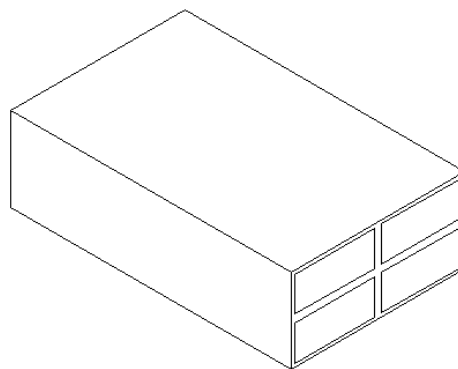
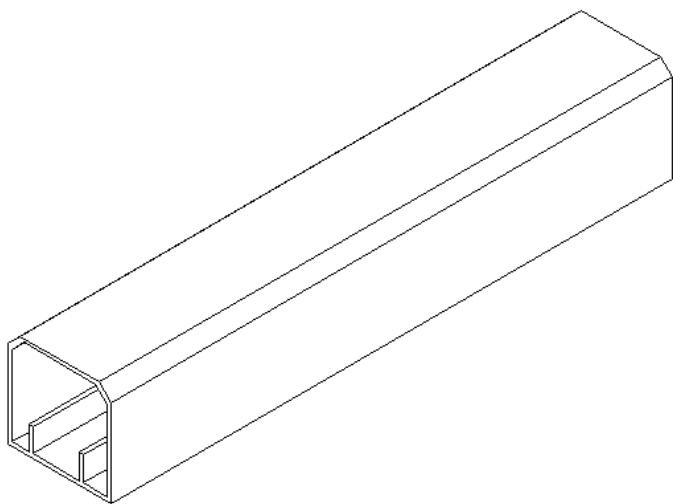
CUSTOMER	ACUWA	CUST P/N.	AM-011
ITEM	TRANSFORMER	DESCRIPTION	YL-1T008N-365
PART NO.	868-00100	DATE	2009/03/5



Units:mm Tolerances: xx.xx0±0.25
x.x0±0.25

TUBE MECHANICAL DIMENSION

INNER CARTON :540*160*70



TUBE =22 PCS

INNER CARTON=18 TUBE=18*22=396 PCS

EXPORT CAPTON : 560*340*160

EXPORT CARTON=4INNER CARON=4*396=1584 PCS

REMARK:	APPROVAL	CHECKED	DRAWN BY
	LiaoZongCheng		Qingxiaobin