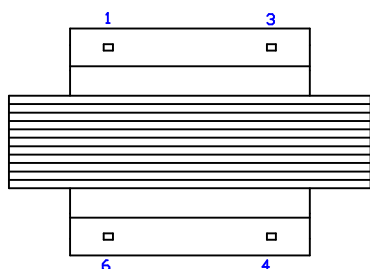
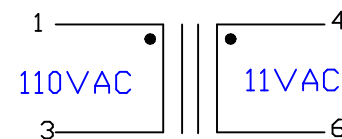
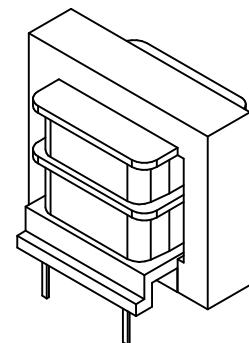
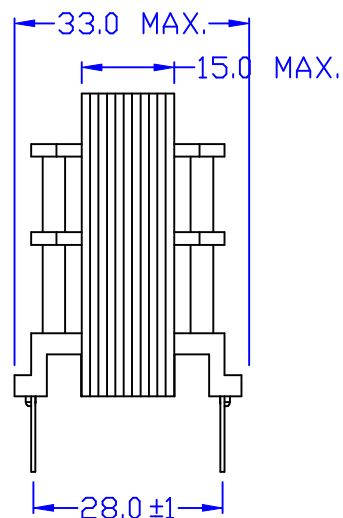
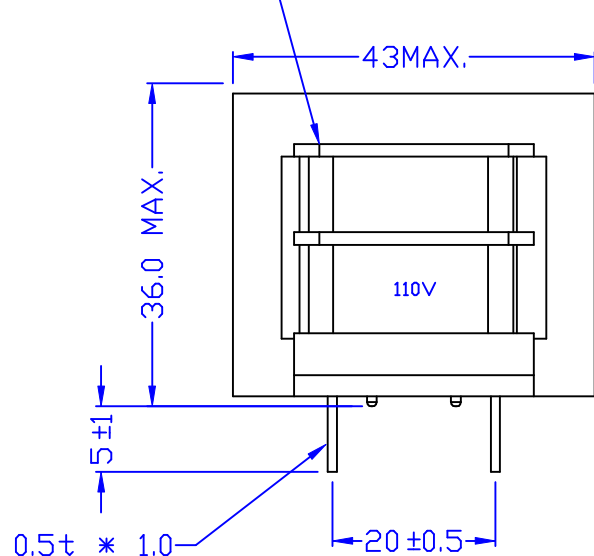


WHITE DOT PIN#1



ELECTRICAL CHARACTERISTICS @25

1. PRIMARY RATED VOLTAGE AND FREQUENCY: 110V 60Hz
2. EXCITING CURRENT : INPUT PRIMARY 110V 60Hz 80mA MAX.
3. SECONDARY RATED VOLTAGE : INPUT VOITAGE 110V 60Hz
 COLOR/PIN NO. : 4-6
 RATED VOLTAGE : 11.0V AC
 RATED CURRENT : 0.6A+/-5%
 NOLOAD VOLTAGE : 13.4V AC+/-5%
4. HI-POT TEST : SHALL WITHSTAND WITHOUT BREAKDOWN, INPUT 50Hz LEAKAGE.
 CURRENT 5mA/1 MIN.
 1.5KV FOR ONE MINUTE BETWEEN PRIMARY TO SECONDARY.
 1.5KV FOR ONE MINUTE BETWEEN PRIMARY TO CORE.
 0.5KV FOR ONE MINUTE BETWEEN SECONDARY TO CORE.
5. INSULATION TEST: 500VDC 100M OHM MIN. BETWEEN WINDINGS AND WINDINGS AND CORE.
6. INSULATION CLASS: B

						Atech®		TITLE
						Atech Technology Co., Ltd.		TRANSFORMER
						TEL: 0212794-6667 FAX: 0212794-8004		DWG. NO.
								ATC-06-009
RELEASE		03/06	PAIR	AL	EUGENE	UNITS:	SAFETY	
		/2006				M/M		
NO.	DESCRIPTION	DATE	BY	CHK	APPD	DATE	P/N:	SHEET 1 OF 1
REVISIONS						03/06/06		DRAW Pair