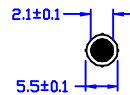
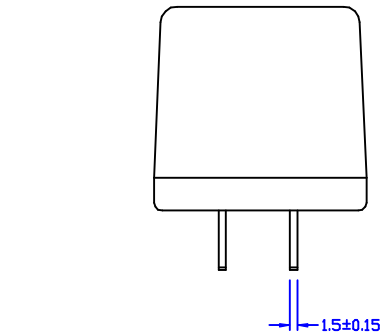
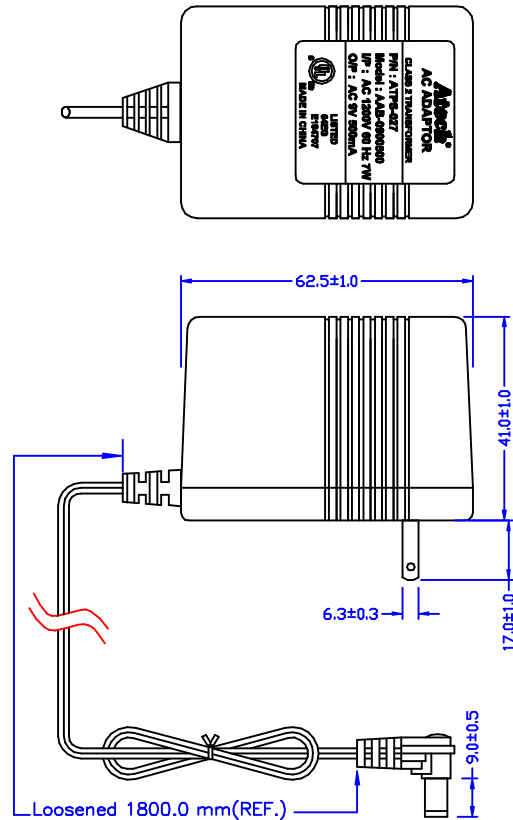


ELECTRICAL CHARACTERISTICS :

1. PRIMARY RATED VOLTAGE AND FREQUENCY : 120V 60HZ.
2. SECONDARY RATED VOLTAGE REGULATION :

I/P	RATED VOLTAGE	RATE CURRENT	NO LOAD VOLTAGE
AC 120V/60Hz	AC 9.0V $\pm 5\%$	AC 500mA	AC 10.5V $\pm 5\%$

3. EXCITING CURRENT : INPUT PRIMARY : 120V 60HZ 80 mA MAX.
4. HI-POT TEST : INPUT 60HZ 1000V FOR ONE MINUTE BETWEEN PRIMARY AND SECONDARY AND BETWEEN PRIMARY TO CORE, 500V FOR ONE MINUTE BETWEEN SECONDARY TO CORE.
5. INSULATION TEST : 500V DC 100M OHM MIN. WINDINGS AND CORE.
6. HUMIDITY TEST : TEMP $32\pm 2^{\circ}\text{C}$ RELATIVE HUMIDITY 90% RH FOR 6 HOURS , AFTER KEEPING 30 MINUTE FOLLOWING INSULATION MUST BE LARGER THAN 5M OHM.
7. TEMPERATURE TEST ; LESS THAN 95°C FOR RATED TEST WITH RESISTANCE METHOD.



						Atech® Atech Technology Co., Ltd. TEL: 802/794-6667 FAX: 802/794-8004	TITLE AC ADAPTOR	
							DWG. NO. ATPS-027	
	RELEASE	12/28/2004	BART	AL	SUEDY		UNITS: M/M	
NO	DESCRIPTION	DATE	BY	CHK	APPD	DATE	SAFETY	SHEET 1 OF 1
REVISIONS						12/28/04		DRAW <i>Pair</i>