



# YONGCHENG

## SPECIFICATION FOR APPROVAL

DATE: JULY 15, 2010

SAMPLE Q'TY 8 PCS

CUSTOMER : ACUWA

CUSTOMER P/N: SM51589L

YONGCHENG P/N : YG-24S02BR

DESCRIPTION : 1000BASE-T MAGNETICS MODULES

APPROVED SIGNATURES	
YONGCHENG APPROVED SIGNATURES	CUSTOMER APPROVED SIGNATURES
APPROVED BY: LiaoZhongCheng	APPROVED BY:
DATE: 2010/07/15	DATE:
APPROVED No. :	APPROVED No. :

**YONGCHENG(ZUNYI) ENTERPRISE INC.**

LanGongShan,Zun Yi City,GuiZhou,China

Tel: 0852-3162322 13087896733 Fax: 0852-3162322 E-mail<lzc0818@163.com

# 1000BASE-T MAGNETICS MODULES

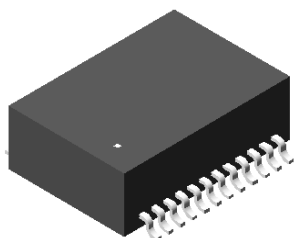
P/N:YG-24S02BR DATA SHEET(REFERENCE BOURNS SM51589L)



**YONGCHENG**  
ELECTRONIC CORP.

Page : 1/3

## Feature



- ◆ Peak reflow temperature rating 235°C
- ◆ Designed to meet IEEE802.3u requirement
- ◆ Pb free Soldering Heat Withstanding
- ◆ Operating temperature range : 0°C to +70°C.
- ◆ Storage temperature range: 0°C to +85°C.

## Electrical Specifications @ 25°C

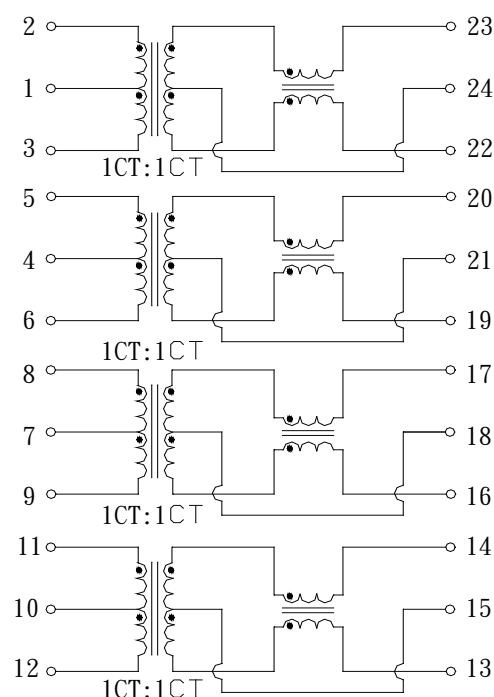
Part Number	Turns Ratio TX/RX (+/-5%)	HI-POT (V <sub>rms</sub> )	DCMRR (dB Min)			Cross talk (dB Min)		
			30MHz	60MHz	100MHz	30MHz	60MHz	100MHz
YG-24S02BR	1CT:1CT	5000	-43	-37	-33	-45	-40	-35

## Continue

Part Number	Insertion Loss (dB Max)	OCL(uH Min) 100KHz/0.1V with 8mA/DC Bias	Return Loss (dB Min)				
	1-100MHz		1-30MHz	40MHz	50MHz	60-80MHz	100MHz
YG-24S02BR	-1.0	350	-18	-14.4	-13.1	-12	-10

## Mechanical

## Schematic



Page : 2/4

PART NO.	SM51589L	DATE	2010/07/15								
DESCRIPTION	TRANSFORMER										
ITEM	TEST CONDITION @ 25 °C	SAMPLES NO. TEST PIN	1	2	3	4	5	SPECIFICATION			
								Min	Typ	Max	
HI-POT(Vrms)	1500Vrms	PRI/SEC	PASS	PASS	PASS	PASS	PASS	1S			
OCL(uH Min)	100KHz/0.1V with 8mA/DC Bias	2-3	451	413	442	398	376	350			
		5-6	489	433	418	468	369				
		8-9	398	415	467	444	430				
		11-12	439	502	513	476	396				
TURN RATIO (±5%) TX/RX	1MHz/sine wave	2-3 : 23-23	PASS	PASS	PASS	PASS	PASS	1CT:1CT			
		5-6 : 20-19	PASS	PASS	PASS	PASS	PASS				
		8-9 : 17-16	PASS	PASS	PASS	PASS	PASS				
		11-12 : 14-13	PASS	PASS	PASS	PASS	PASS				
Insertion Loss (dB)	1-100MHz	2-3 TO 23-23	PASS	PASS	PASS	PASS	PASS	-1			
		5-6 TO 20-19	PASS	PASS	PASS	PASS	PASS				
		8-9 TO 17-16	PASS	PASS	PASS	PASS	PASS				
		11-12 TO 14-13	PASS	PASS	PASS	PASS	PASS				
Return Loss(dB)	1-30 MHz	2-3 TO 23-23	PASS	PASS	PASS	PASS	PASS	-18			
		5-6 TO 20-19	PASS	PASS	PASS	PASS	PASS				
		8-9 TO 17-16	PASS	PASS	PASS	PASS	PASS				
		11-12 TO 14-13	PASS	PASS	PASS	PASS	PASS				
	40 MHz	2-3 TO 23-23	PASS	PASS	PASS	PASS	PASS	-14.4			
		5-6 TO 20-19	PASS	PASS	PASS	PASS	PASS				
		8-9 TO 17-16	PASS	PASS	PASS	PASS	PASS				
		11-12 TO 14-13	PASS	PASS	PASS	PASS	PASS				
	50 MHz	2-3 TO 23-23	PASS	PASS	PASS	PASS	PASS	-13.1			
		5-6 TO 20-19	PASS	PASS	PASS	PASS	PASS				
		8-9 TO 17-16	PASS	PASS	PASS	PASS	PASS				
		11-12 TO 14-13	PASS	PASS	PASS	PASS	PASS				
	60-80 MHz	2-3 TO 23-23	PASS	PASS	PASS	PASS	PASS	-12			
		5-6 TO 20-19	PASS	PASS	PASS	PASS	PASS				
		8-9 TO 17-16	PASS	PASS	PASS	PASS	PASS				
		11-12 TO 14-13	PASS	PASS	PASS	PASS	PASS				
	100 MHz	2-3 TO 23-23	PASS	PASS	PASS	PASS	PASS	-10			
		5-6 TO 20-19	PASS	PASS	PASS	PASS	PASS				
		8-9 TO 17-16	PASS	PASS	PASS	PASS	PASS				
		11-12 TO 14-13	PASS	PASS	PASS	PASS	PASS				
REMARK:											

# SAMPLES TEST REPORT



**YONGCHENG**  
ELECTRONIC CORP.

Page : 3/4

[illegible]

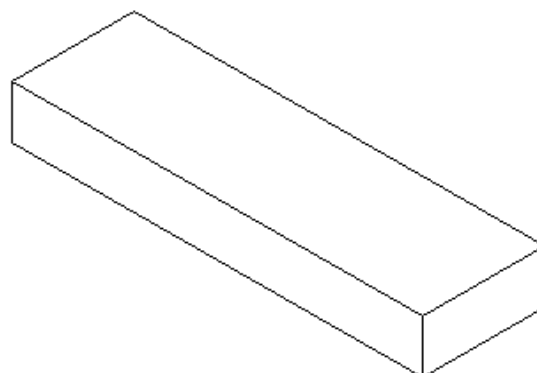
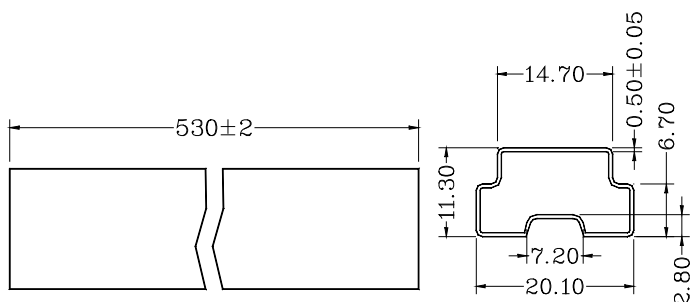


# YONGCHENG ELECTRONIC CORP.

## SAMPLES PACK SPECIFICATIONS

Page: 4/4

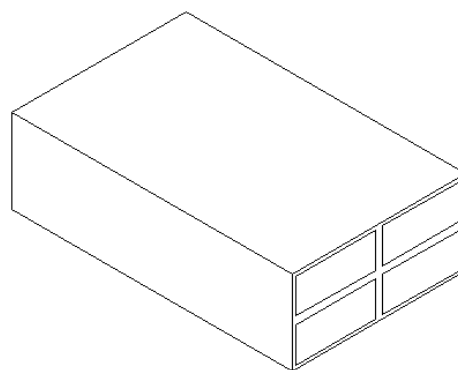
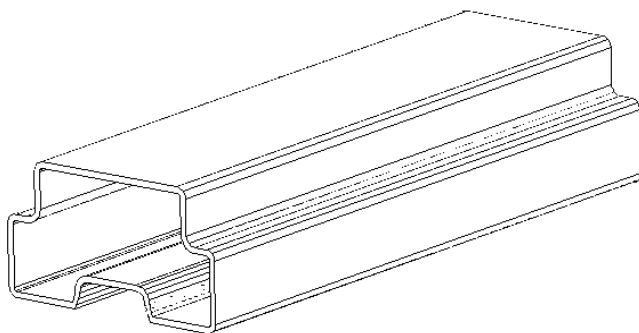
CUSTOMER	ACUWA	CUST P/N.	SM51589L
ITEM	TRANSFORMER	DESCRIPTION	YG-24S02BR
PART NO.	818-00780	DATE	2010/07/15



Units:mm Tolerances:  $xx.xx0 \pm 0.25$   
 $x.x0 \pm 0.25$

TUBE MECHANICAL DIMENSION

INNER CARTON :540\*160\*70



TUBE =29 PCS

INNER CARTON=42 TUBE=42\*29=1218PCS

EXPORT CAPTON : 560\*340\*160

EXPORT CARTON=4INNER CARON=4\*1218=4872PCS

REMARK:	APPROVAL	CHECKED	DRAWN BY
	廖忠誠		覃小彬