

Overview

—1—		4.5 Serial Numbers	4
1. General Terms and Conditions	1	4.6 Authenticity/Sealing.....	4
1.1 Payment & Delivery	1	4.7 Rating Label	4
1.2 Service Requirements	1	—5—	
1.3 Purchase Agreement.....	1	5. Packaging.....	5
1.4 Code of Conduct.....	1	5.1 Main unit protection	5
—2—		5.2 Accessories	5
2. Product Requirements.....	2	5.3 Cushions/Inlays	5
2.1 Required Documents.....	2	—6—	
2.2 Samples.....	2	6. Logistics	5
2.3 Accessories	2	6.1 Weights	5
2.4 Royalties/Intellectual Property (IPR).....	2	6.2 Master/Shipping Carton	5
2.5 Used Materials.....	2	6.3 Container Loading.....	5
—3—		—7—	
3. Testing	3	7. Attachments	6
3.1 Applied Tests	3	7.1 Attachment 1	
3.2 Testing procedure.....	3	Limits of hazard substances in plastic materials	6
3.3 Inspections	3	7.2 Attachment 2	
—4—		FEFCO and ECMA catalogue exsamples	7
4. Customization.....	3	7.3 Attachment 3	
4.1 Gift Box	3	Master/shipping carton label requirements.....	13
4.2 User manual	4	7.4 Attachment 4	
4.3 Logo.....	4	Rating Label Layout.....	15
4.4 Software/OSD.....	4		

1. General Terms and Conditions

This document contains TARGA's guidelines for any purchase of products. These guidelines are binding. Variations of these terms have to be authorized by TARGA's purchase-/product management in writing.

1.1 Payment & Delivery

Payment: Open Account (OA) or Letter of Credit (LC) 90 days
 Delivery: DDP Soest or FOB

For the packing of the goods you have to use suitable board, plastic or press board pallets. A wooden pallet is not possible due to special import regulations in Germany. If the goods will be delivered nevertheless on a wood pallet, then all fees for the examination and disposal covered by supplier.

1.2 Service Requirements

- RMA handling (information about service handling has to be provided by supplier)
- 39 month Warranty
- 1.5% over shipment
- max. defect rate per year (information about the maximum defect rate per year has to be provided by supplier)

1.3 Purchase Agreement

A Purchase Agreement fixing all parts of the project (like product specifications, quantity pricing, delivery dates, ...) will be provided by TARGA.

1.4 Code of Conduct

Our main customer LIDL is an active member of the alliance initiative BSCI (Business Social Compliance Initiative). The aim of the BSCI members is to introduce binding uniform social minimum standards for all suppliers of value-added chain within the respective countries and to follow up its compliance in line of well-defined criteria on the part of BSCI by external auditing companies. An essential part for the BSCI-members is the relevant Code of Conduct. To keep these standards a declaration of consent and a production unit record sheet has to be filled and signed by supplier to declare that these standards are confirmed by supplier.

2. Product Requirements

- The product specifications are binding. A special spec sheet (called 'request list'; provided by TARGA) has to be filled out and signed by supplier.
- All products should have a real power-off-switch to achieve power consumption of 0 Watt (can be on the backside of the device).
- Red LED's are allowed to indicate hazards only. For indicating status, charging, pairing, etc, other colors (e.g. orange, green or blue) have to be used.
- For all audio devices with headphones (portable or not portable) the set must not deliver more than 100 dB for maximum SPL, according to EN50332-1:2000. For audio device only, the maximum output voltage at the headphone connector has to be limited to max. 150mV. For headphones only, the wide band characteristic voltage has to be at least 75mV, according to EN50332-2:2003.

2.1 Required Documents

The following documents have to be provided by supplier:

- EMI-documents (full report & certificate)
- safety-documents (full report & certificate)
- datasheets
- technical sheets
- circuit diagram
- engineering specification
- picture documentation
- BOM (bill of material)
- service manual
- all other relevant certificates

2.2 Samples

During the initial evaluation process around 10 samples are need for function and quality testing. The exact quantity and further samples will be advised separately.

2.3 Accessories

- all for operation needed accessories have to be included (e.g. batteries, cables, software)
- cables for all possible parts/connectors inclusive
- length of cables must be at least 1.80 metres (power cord 2.0 meters).
- all cables should have the same length
- Battery (green battery)
- consignment of Targa of Test-DVD or DVD-Media to be handed / packed

2.4 Royalties/Intellectual Property (IPR)

General indemnification is needed. All royalties have to be paid by supplier (except DivX).

2.5 Used Materials

All products and accessories have to be RoHS compliant, according to EU-Directive 2002/95/EC. In addition the goods have to be free of DecaBDE (Decabromodiphenyl ether).

Additionally the used plastic material has to keep the following limits, according to ZEK-01-08 (limits for category 2, independent from contact time):

Requirements		
Designation	Limit	
Nonylphenol	< 0.01 %	< 100 mg/kg
PAH		< 1 mg/kg for single assay Benzo[a]pyren
substances according to EPA		< 10 mg/kg amount 16 PAH (EPA)
Phthalates (DBP, BBP, DEHP, DINP, DNOP, DIDP)	< 0.1 % (weight percent)	< 1000 mg/kg

A detailed list of material limits is attached to this document (Attachment 1).

3. Testing

All products will be tested in Germany. The test lab for final judgements is Oberingenieur Berg & Lukowiak GmbH, Hüllhorst, Germany (OBL). Furthermore TARGA recommends EMV-Testhaus in Germany, Taiwan and China for retests or debugging activities.

In case of negative test results (incl. environmental test reports) supplier will cover all costs for testing and further debugging. All necessary samples for qualifying the mass-production and getting mentioned approvals must be provided to TARGA free of charge and freight / customs prepaid.

3.1 Applied Tests

All products will be tested for:

- Safety
- EMI
- Usability
- Environment (RoHS & plastic materials)

3.2 Testing procedure

3 Prototypes of the product will be tested right after order. After closing of all occurred items during the prototype test 3 final samples (so called zero-series) have to be provided by supplier for retesting.

During production 3 additional samples will be taken out of the production quantity for final re-testing.

3.3 Inspections

During mass production the factory will be visited by TARGA's quality management team. Therefore the factory address and production schedule is needed. Additional a factory audit and production inspection by LIDL's/OBL's third party is performed during production.

4. Customization

In one project up to 10 different language versions (country splits) are theoretically possible. Usually the number of different versions is 5-6. Different versions vary in gift box, manual and software design (all provided by TARGA).

Housing color has to be agreed by TARGA and supplier. For CE-products usually two models in parallel (silver and black) are ordered.

4.1 Gift Box

The gift box layout is provided by TARGA (as printable PDF file only!). Therefore a die cut is required by TARGA's artwork department.

- | | |
|------------------|--|
| Material: | The boxes have to correspond with the FEFCO or ECMA catalogue for folding boxes (see attachment 2).
Material for carton boxes has to be made of 400 g/m² GD2 (=coated chromo-duplex cardboard). For products with an own weight of more than 2kg , folding boxes with E-flutes respectively B-flutes have to be used (see attachment 2, on page 12). PET 0.2mm (small surface) – 0.4mm (big surface) has to be used for viewing window . For small and light products blister packaging can be used (blister hood mp-thickness reference value ca. 360 mp with cardboard back of 300 g/m², white double side coating). |
| Printing: | For the printing procedure 4c Euroscale high-gloss color offset print is used (e.g. UV-Coating, BOPP Film, no Vinyl). For Blister back cards high-gloss is not necessary because this effect is already achieved by the PP respectively PET material. |
| Quality: | <ul style="list-style-type: none"><input type="checkbox"/> Folding carton with glue tabs<input type="checkbox"/> Non-tearing folds with paperboard containers<input type="checkbox"/> No or almost no visible ripple<input type="checkbox"/> No sharp or peaked corners and edges with PE/PP materials<input type="checkbox"/> High transparency with viewing windows and blister hood<input type="checkbox"/> Folding boxes shall always have the insertion flaps opposite to each other |

Blister: Blister always has to have a **euro-perforation** to allow for both chute placement and hanging. In addition, a **minimum width of 8 cm** has to be observed to avoid the item falling through the grid of the trolley. For optimal handling a **pictogram** shall be integrated on the back of the blister **symbolising how the blister can be cut open properly**. (see also attachment 2, on page 11)

4.2 User manual

The artworks for the user manuals will be provided by TARGA

- usually at least 5 – 10 languages in one box
- available languages have to be announced by supplier
- Front and back page must be of high-quality paper (thicker paper).
- Used paper has to be in high glossy and colour.
- Front and back page should be double sided (fold-out).

4.3 Logo

High resolution logo file will be provided by TARGA. Logo has to be printed:

- Front cover or
- Top Cover and/or
- Back cover

Final logo position has to be confirmed by TARGA.

4.4 Software/OSD

- min. 5 languages, preferred 10 – 20 (screenshots required by supplier)
- all languages must be contained in the user manual

4.5 Serial Numbers

TARGA provides format and array. Every single unit has to have a unique serial number. The serial number has to be printed on:

- Product: On the rating label.
- Gift box: As barcode with number on one side only, as small as possible
- Shipping carton: All in the shipping carton included serial numbers have to be printed on the shipping carton (can be sticker)

4.6 Authenticity/Sealing

- Permanent adherent stick-on label (non-peelable) placed in centre of opening angle of gift box
- Exact location and qty of seals per carton will be defined individually; usually 2-3 seals are required
- Blister have to be UVC or heat sealed.

4.7 Rating Label

A draft for the rating label has to be provided by supplier according to TARGA's standard layout (see attachment 4). The rating label has to be confirmed by TARGA before production.

5. Packaging

5.1 Main unit protection

With plastic bag or white foam

5.2 Accessories

Cables, manuals, remote controls, etc. have to be packed into plastic bags.

5.3 Cushions/Inlays

The product has to be protected by adequate cushioning inlays, which must be easy to recycle; paper/carton solutions are preferred

6. Logistics

6.1 Weights

The following weights are needed from supplier:

- individual unit / components / accessories
- gross (with carton)
- net (only the product)

6.2 Master/Shipping Carton

The number of pcs per master/shipping carton are given by TARGA. Size and weight of the master/shipping carton are needed from supplier.

All master/shipping cartons have to carry special labels. The information on the labels will be provided by TARGA. You find a detailed request of the label in attachment 3.

6.3 Container Loading

Container load for 20ft, 40ft, 40HCfts is needed (for each container size palletized and non-palletized quantity required). Palletized on hardpaper, edge protected, shrinked and with cover against humidity.

7. Attachments

7.1 Attachment 1: Limits of hazard substances in plastic materials

1. PAH (Polycyclic Aromatic Hydrocarbon)

The 16 substances from the PAH group listed below, have a total limit value of <10 mg/kg.

* Benzo(a)pyrene has a limit value of <1 mg/kg.

PAH - List Of Substances:	CAS-Number
Naphthalene	000091-20-3
Acenaphthylene	000208-96-8
Acenaphthene	000083-32-9
Fluorene	000086-73-7
Phenanthrene	000085-01-8
Anthracene	000120-12-7
Fluoranthene	000206-44-0
Pyrene	000129-00-0
Benzo(a)anthracene	000056-55-3
Chrysene	000218-01-9
Benzo(b)fluoranthene	000205-99-2
Benzo(k)fluoranthene	000207-08-9
Benzo(a)pyrene*	000050-32-8
Dibenzo(a,h)anthracene	000053-70-3
Benzo(g,h,i)perylene	000191-24-2
Indeno(1,2,3-cd)pyrene	000193-39-5

2. Phthalate

The limit value is 0.1 percent by weight (e.g. 1 g / 1 kg) per single substance.

Phthalate - List Of Substances:	CAS-Number
Dibutylphthalate (DBP)	000084-74-2
Benzylbutylphthalate (BBP)	000085-68-7
Di (2-ethylhexyl) phthalate (DEHP)	000117-81-7
Dioctylphthalate (DOP)	000117-84-0
Diisononylphthalate (DINP)	068515-48-0; 028553-12-0
Diisodecylphthalate (DIDP)	068515-49-1; 026761-40-0

3. Nonylphenol

The limit value for Nonylphenol (CAS 104-40-5) is 100 mg / 1 kg

7.2 Attachement 2 : FEFCO and ECMA catalogue examples

Every supplier is obliged to check and - as far as technically possible - to adopt these packaging specifications with regard to his products, their own weight, volume, safety regulations etc. Deviations from the parameters stated here have to be agreed to by TARGA.

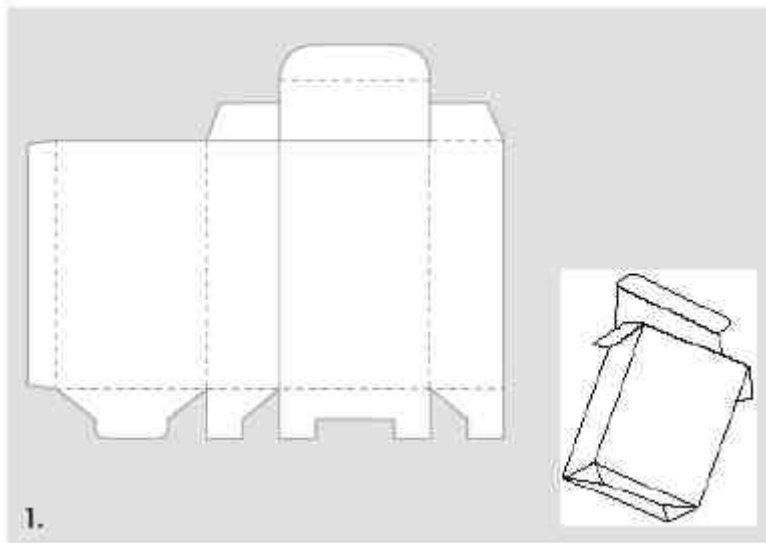
Packaging Definition Folding box

1. ECMA code A5520

Diecut: with insertion closure and plug bottom

Material: 400 g/m² GD2 (=coated chromo-duplex cardboard)

Sample packaging:



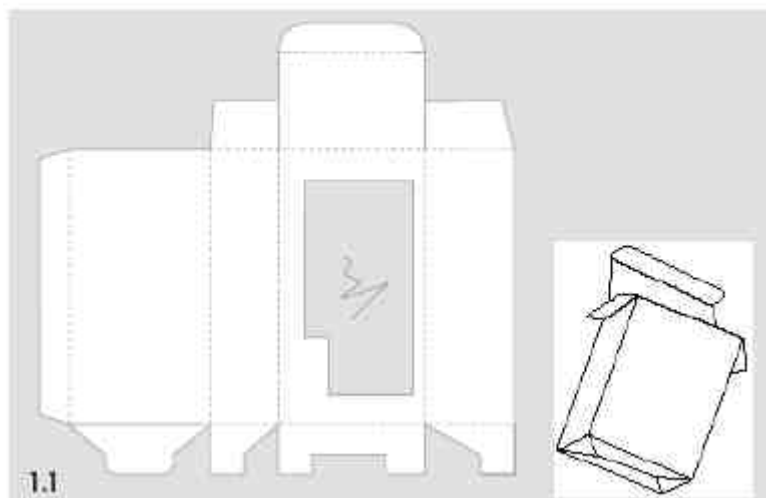
1.1 ECMA code A5520

Diecut: with insertion closure, plug bottom and viewing window

Material: 400 g/m² GD2,

Viewing window: PET 0.2 mm (small surface) - 0.4 mm (big surface)

Sample packaging:



Standard guidelines of purchase

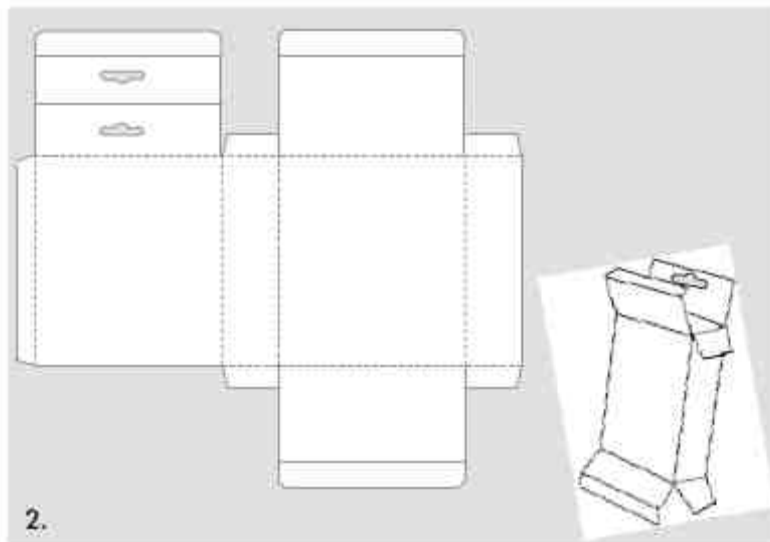
Whether Euro hangers shall be used with a packaging or not has to be explicitly defined in the order to the supplier

2. ECMA code A2021

Diecut: with 2 insertion closures (flaps opposite to each other)
and Euro hanger

Material: 400 g/m² GD2,

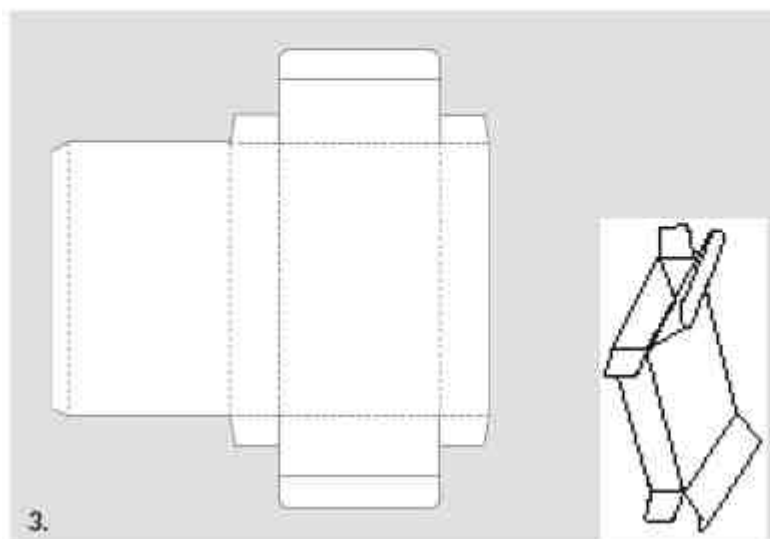
Sample packaging:



3. ECMA code A2420

Diecut: with 2 insertion closures (flaps opposite to each other)
Material: 400 g/m² GD2,

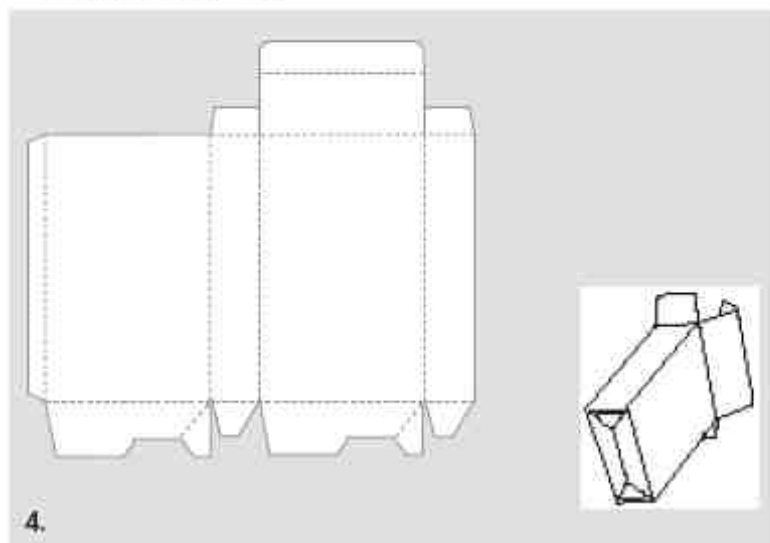
Sample packaging:



Standard guidelines of purchase

4. ECMA code A6020

Diecut: with insertion closure and automatic bottom
Material: 400 g/m² GD2,



Sample packaging:

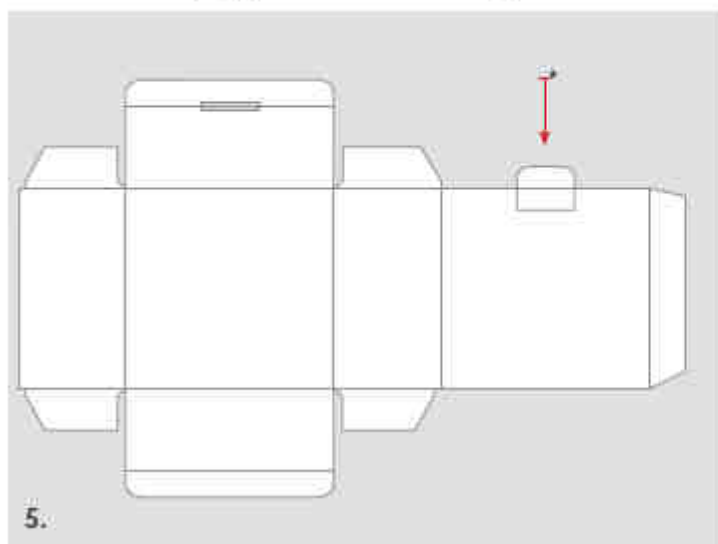


5. Cardboard box with locking flap

Diecut: with 2 insertion closures (flaps opposite to each other) and additional locking flap*

Material: E-pipe

Note: use for big packaging in particular because the locking flap provides for additional strength



Sample packaging:



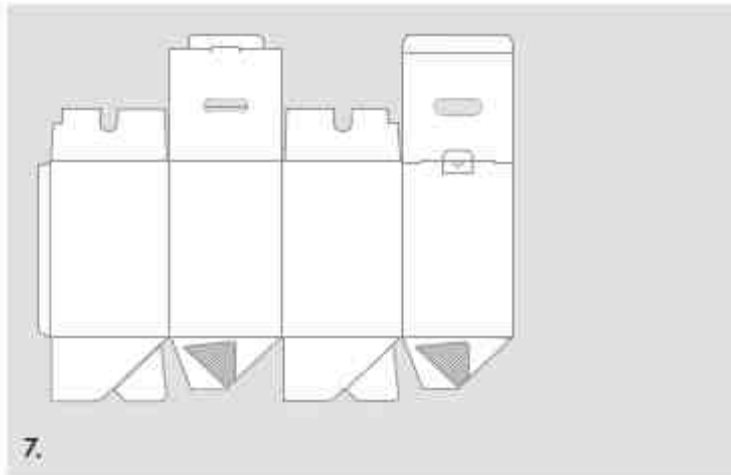
7. Cardboard box with carrying handles

Die cut: insertion closure with carrying flaps

Material: E-pipe - B-pipe

Note: use with heavy and unhandy products in particular,
additional carrying aid

Sample packaging:



Packaging Definition Blister

Blister packaging consists of two components: blister hood and back card.

The blister always has a europa-perforation to allow for both chute placement and hanging. The blister shall feature rounded edges and clean side borders to avoid that it is too sharp-edged or peaked. In addition, a minimum width of 8 cm has to be observed to avoid the item falling through the grid of the trolley.

With blisters containing a product which is not placed right in the middle it has to be observed that, due to weight distribution, the europa-perforation has not to be placed in the middle, i.e. it has to be offset in a way that the blister always hangs straight in the shelves!

For optimal handling a pictogram shall be integrated on the back of the blister symbolising how the blister can be cut open properly.

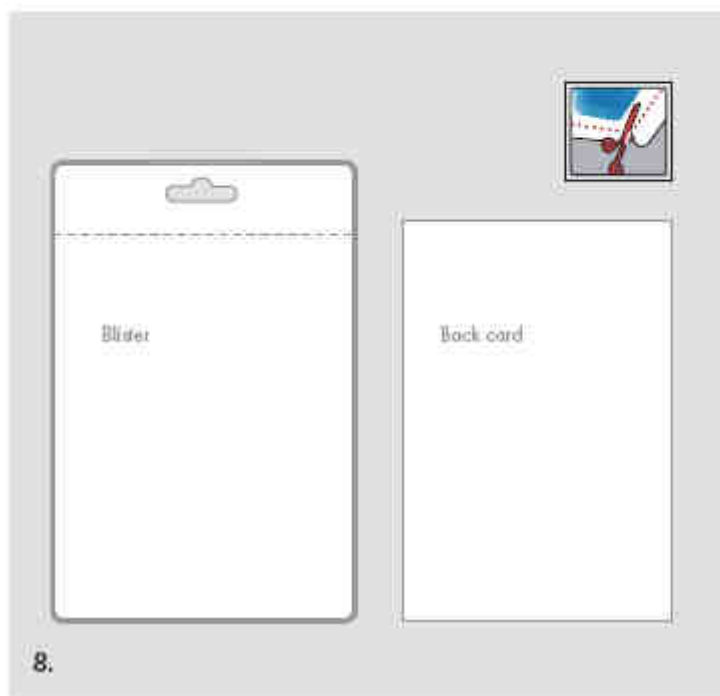
8. Blister with europa-perforation

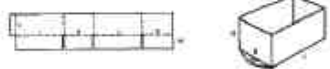
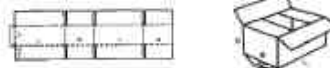
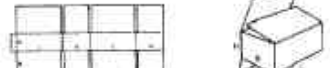




Diecut: blister with rounded edges, card rectangular



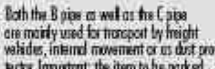



Material: plastic hood of PET (µm-thickness reference value ca. 360 µm)

Cardboard back of 300 g/m², white double-sided coating,
high-gloss not required

Sample packaging:

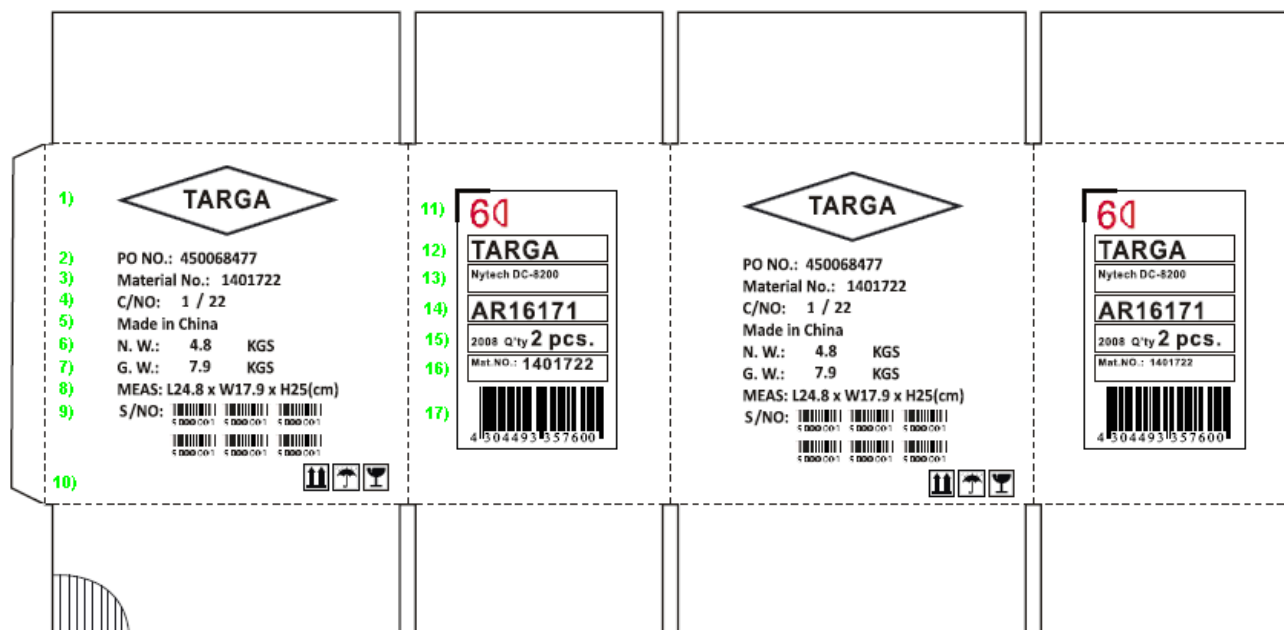


Packaging Definition	Fefco code description
	Fefco 0200 Folding box, bottom locking flaps meet outside
	Fefco 0201 Folding box, bottom and lid locking flaps meet outside
	Fefco 0203 Folding box with fully overlapping outer bottom and lid locking flaps
	Fefco 0206 Folding box, meeting inner locking flaps and fully overlapping outer and lid locking flaps
	Fefco 0212 Folding box, outer bottom locking flaps meet, insertion flap, side flaps at the body (the design of the body can be changed according to the designs 0201 to 0206)
	Fefco 0215 Folding box with plug-in bottom (plug-in bottom box), insertion lid, side flap at the bottom
	Fefco 0216 Folding box with plug-in bottom (plug-in bottom box), outer lid locking flaps meet (the design of the lid locking flaps can be changed according to the designs 0201 to 0206)

Overview over the different kinds of corrugated cardboard	
	One-side-coated corrugated cardboard (roll) composed of top layer and pipe layer
	E-pipe, micro-pipe or finest pipe Pipe height: 1.0 – 1.8 mm, pipe distribution: 3.0 – 3.5 mm (1 pipe). 1-pipe corrugated cardboard is composed of outer layer, pipe layer and inner layer. Mainly for selling or display packaging.
	B-pipe, fine pipe Pipe height 2.2 – 3.0 mm, pipe distribution: 5.5 – 6.5 mm (1 pipe) dito
	C-pipe, medium pipe, coarse pipe Pipe height 3.2 – 3.9 mm, pipe distribution: 6.8 – 7.9 mm (1 pipe) dito
	Both the B pipe as well as the C pipe are mainly used for transport by height vehicles, internal movement or as dust protector. Important: the item to be packed should be self-supporting or the box should be completely filled-up.
	EB-pipe and BC-pipe (2 pipes) 2-pipe corrugated cardboard composed of 2 single-sided pipe layers, glued and laminated with a covering layer.
	BCA-pipe (3 pipes) 3-pipe corrugated cardboard composed of 3 single-sided corrugated layers with one outer layer. Heavy corrugated cardboard but lighter than wood. Does not splinter or break and offers optimal protection of the content due to the shock-absorbing effect of the corrugated cardboard.
	X-Ply (3-pipes) Heavy corrugated cardboard according to the ply wood system, i.e. the pipe layers cross each other and consequently offer highest bending and twisting stiffness. Considerably higher stacking compression resistance compared with ordinary corrugated cardboard composed of the same paper. Particularly suitable for big containers and heavy goods (machine and plant engineering)

7.3 Attachment 3: Master/shipping carton label requirements

The following information must always be on the transport packaging in English and as large as possible:



- 1) Diamond with product brand in it (for example TARGA, SilverCrest, Nytech,...).*
- 2) PO number.*
- 3) Material number of the product.*
- 4) Carton number of total cartons.
- 5) Country of origin.
- 6) Net weight in kg (merchandise excluding transport packaging).
- 7) Gross weight in kg (merchandise including transport packaging).
- 8) Dimensions (Box dimensions: length x width x height)
- 9) Each serial number included in the shipping carton
- 10) Handling marks

11) Country symbol (colored)

Country group	Country group 1	Country group 2	Country group 3	Country group 4	Country group 5	Country group 6
Delivery to	DE, AT, CH, NL, PT	FR, BE	GB, IE, CY, FI, SE, DK, NO, GR	PL, HU, SI, CZ, SK, HR	ES, IT, MT	GB, IE, CY
Lettering colour	black	green	purple	blue	orange	red
Symbol	1□	2○	3L	4△	5☆	6D

- 12) TARGA
- 13) Brand and model name.*
- 14) Purchasers code.*
- 15) Year of production and quantity in shipping carton
- 16) Material number of the product.*
- 17) EAN code of the respective item, 13-digit.*

* Information is given by TARGA

Standard guidelines of purchase



7.4 Attachment 4: Rating Label Layout

Brand- logo	Product name with material number	WEEE: Brand- logo **
	additional information given by TARGA	
GS-logo and/or CE-logo		TARGA GmbH Lange Wende 41 D-59494 Soest
Serialnumber ***		

** the repeating of the brand-logo under the headline 'WEEE' is necessary to indicate how is responsible for the disposing in Europe.

*** if possible

Example:

TARGA	Visionary LCD 17-3 12345	WEEE: TARGA
	Rating: AC 100-240V 50-60Hz 2A XXXXXXXXXXXXXXXXXX XXXXXXXXXXXXXXXXXX Made in China	
		TARGA GmbH Lange Wende 41 D-59494 Soest
Serial No.: X008220001		

Symbols:

